



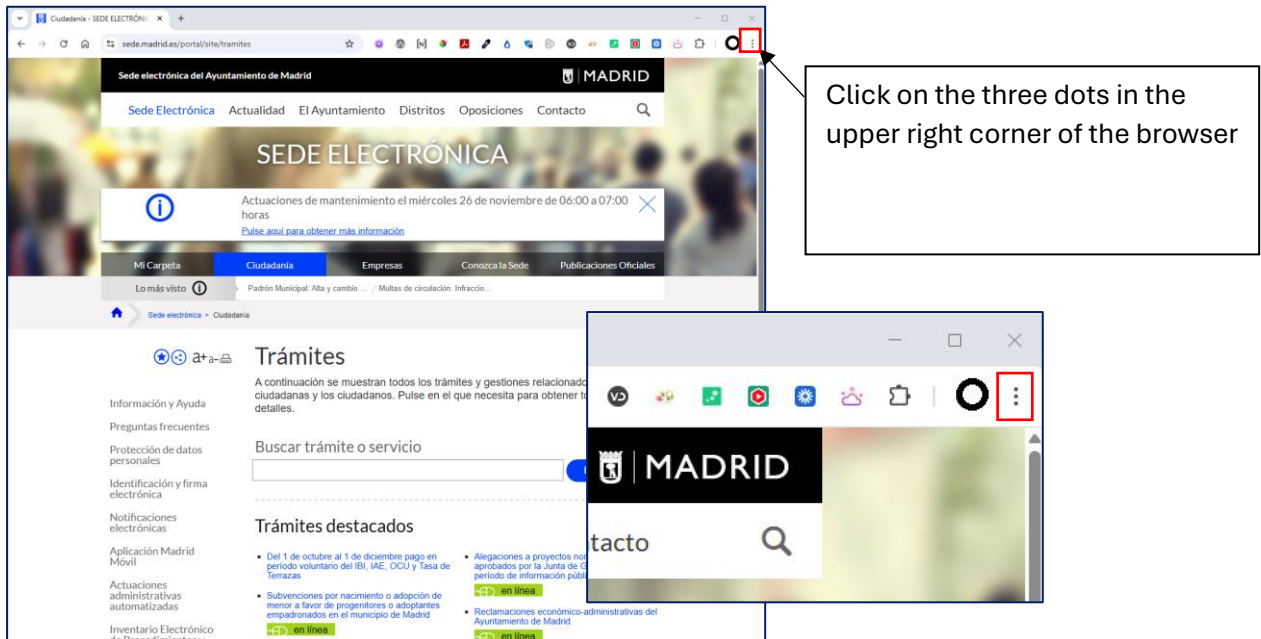
GOOGLE CHROME CONFIGURATION OF AUTOMATIC TRANSLATOR

Contents

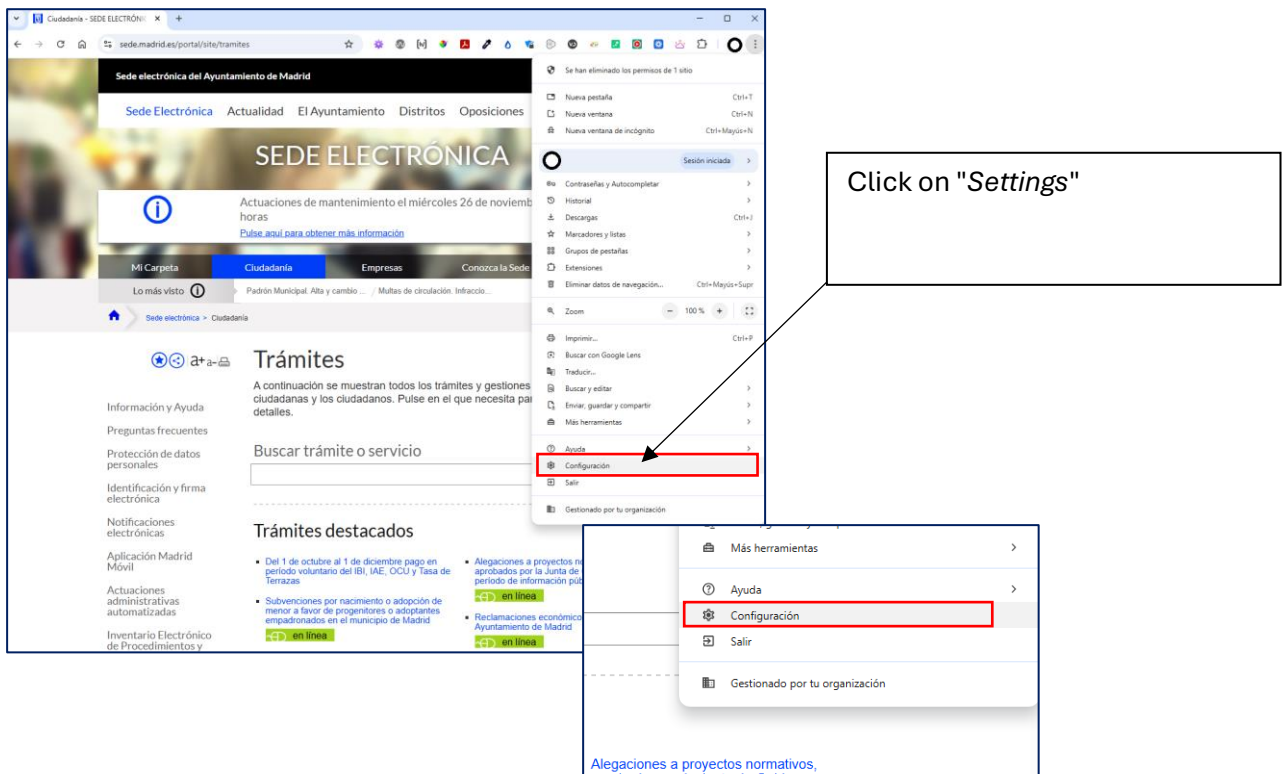
Access your browser settings	2
Enable Google Translate	3
Set up Google Translate	4
Check the translation	5

Access your browser settings

When the browser opens, we locate the three dots in the upper right corner that give access to the browser's options menu

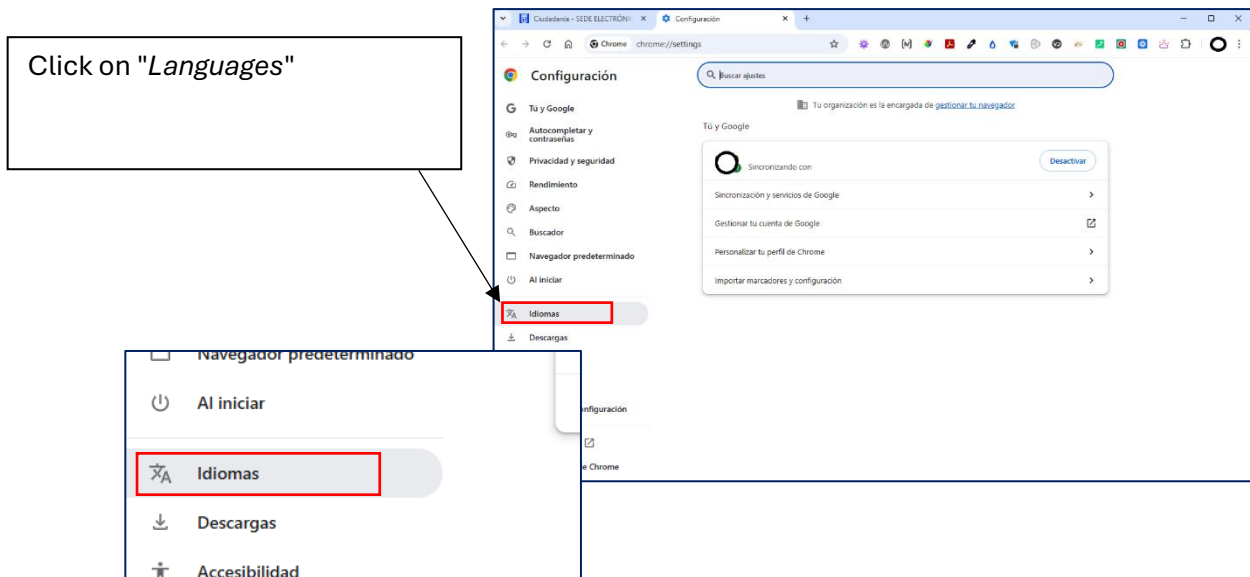


When the browser options menu is displayed, we click on "Settings"

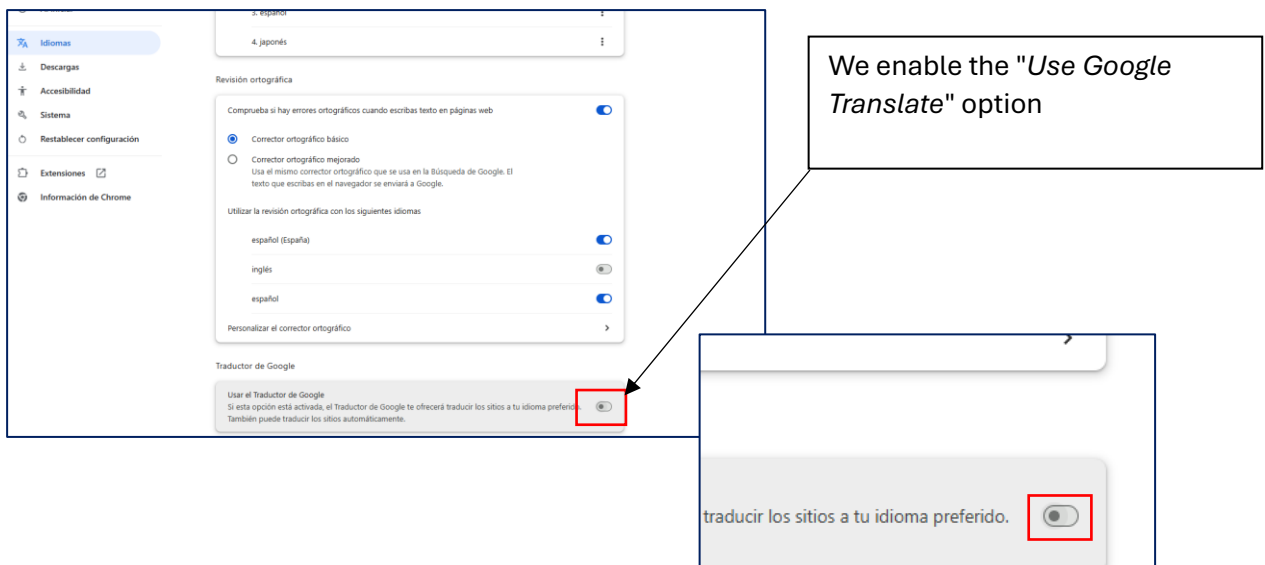


Enable Google Translate

In the options bar on the left side, click on the "*Languages*" option

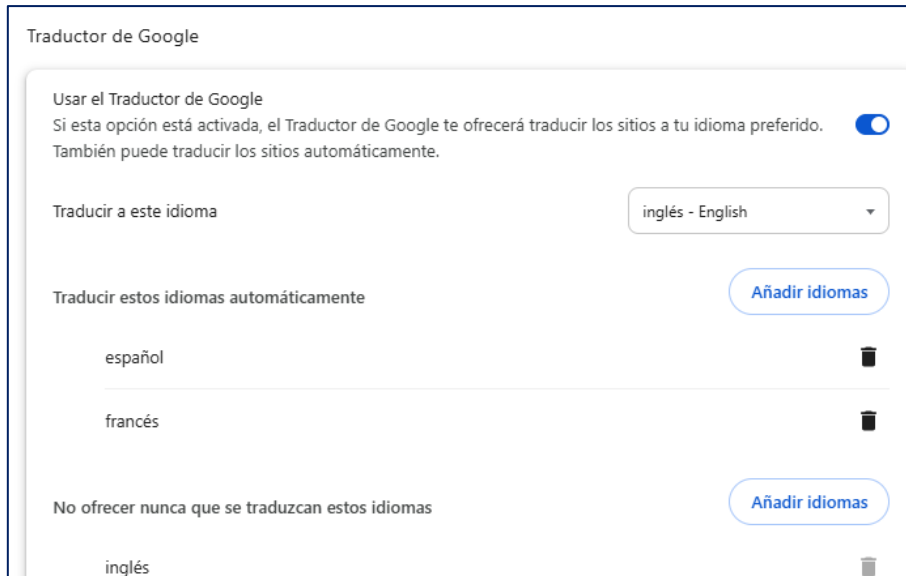


When we access the "*Languages*" options we must go to the end of these to where the "Google Translate" section is located and enable it.

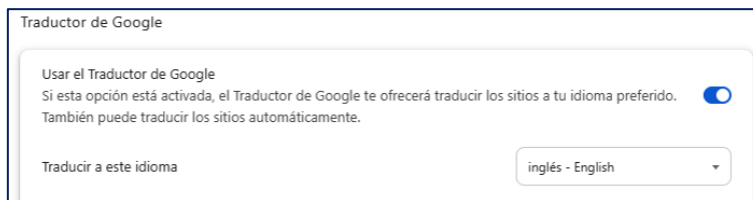


Set up Google Translate

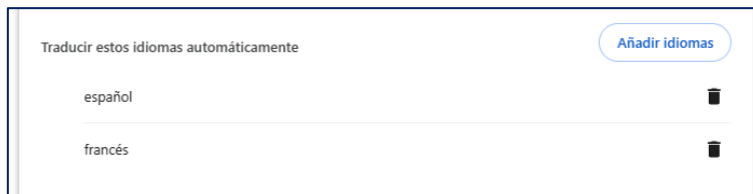
Enabling the "Use Google Translate" option displays the Google Translate settings.



In the first section we must choose the language into which we want the translation to be made. We set it to "English – English" as we see in the image:



In the next section, we will select which languages the translation will be made from, i.e. any website visited that is in the languages that are configured in that section will be translated into the "English – English" that has been configured in the previous section.

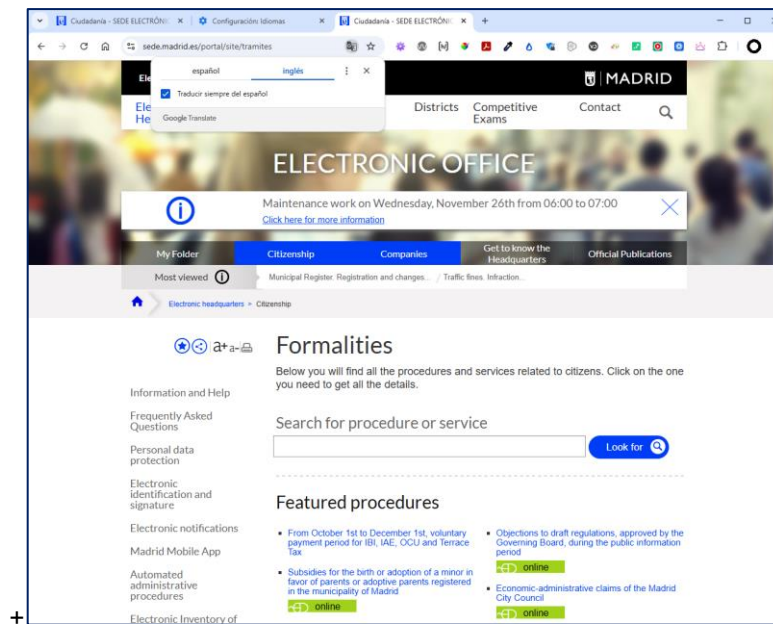


The last section indicates that web pages in the languages that are configured here will not be translated by the translator



Check the translation

Enter the electronic office, the page is automatically translated:



The procedures are automatically translated into the chosen language, whether they are GEDIE or WFORM:

